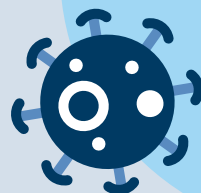
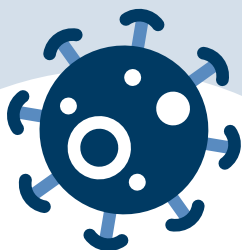


COVID-19 Infection Survey

Take part in the biggest
nationwide survey of
COVID-19 infections.



To view this summary in different
languages, scan here. Or visit
www.ons.gov.uk/cis/languages



Study Contact:
0800 085 6807



Department
of Health &
Social Care

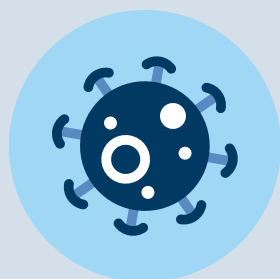
Take part in the **biggest nationwide survey of COVID-19** infections.

Your support will **help guide the response to this pandemic** and get back to normal life.



www.ons.gov.uk/cis

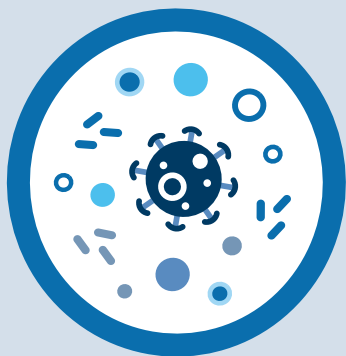
What is the survey about?



The aim of the survey is to find out **how many people have COVID-19, either with or without symptoms.**

This is particularly important as more people start getting vaccinated against COVID-19 and **we start to monitor how well the vaccines work in the real world.**

i Since April 2020, the Office for National Statistics and the University of Oxford have been conducting the survey on behalf of the Governments of the UK.



Why should I take part?

To help the ongoing fight against COVID-19 we need households like yours to join the thousands already taking part in the COVID-19 Infection Survey.

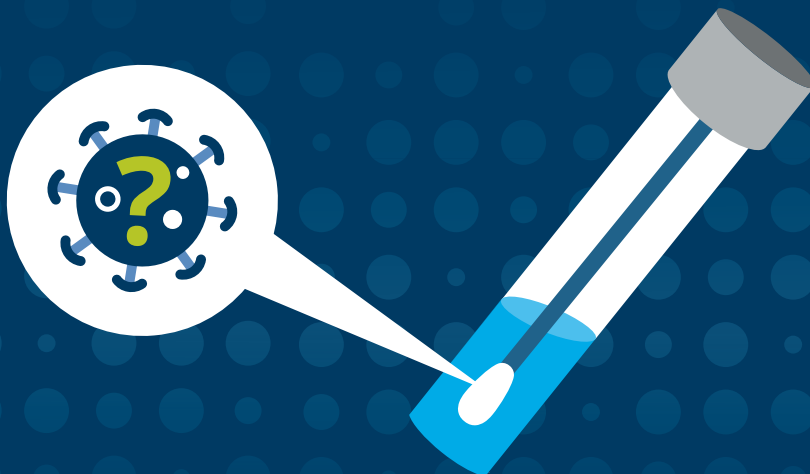
Your involvement in this survey will help us build a picture of COVID-19 infections in your area.

This will help make sure local responses are appropriate and effective.

We are not just testing people who have signs of having the virus, like a fever or cough, because **we know that sometimes people can get the virus without symptoms.**

Taking part in this study is your choice. All the information you give us is protected by law and is treated as confidential.

Everyone in the survey can receive a COVID-19 vaccination when they are eligible to do so – **and people who have received a COVID-19 vaccination can be in the survey.**




What does the survey involve?

- A survey team member will come to your home and ask some questions about each person over the age of 2 who wants to take part.
- They will show those who are 12 years and over how to take throat and nose swabs themselves. We will ask the parents or carers to take the swab from children aged 2-11 years old. The swab is a soft sponge on a stick and doesn't hurt.
- The survey team member will not enter your home and will bring personal protective equipment and maintain social distancing.

You could agree to:

- A** one visit only
- B** the first visit and then a visit every week for one month (**5 visits in total**)
- C** the first visit, a visit every week for one month, and then monthly visits until the survey finishes (**at least 6 visits in total**). At the moment, the survey is running until April 2022. We will let you know if this changes.

 To watch a video that shows how to take a swab, see www.ndm.ox.ac.uk/covid-19/covid-19-infection-survey/video-guides

How do I take part?

To take part you will need to **register with us as soon as possible**:

1



Call the registration team on **0800 085 6807**.
If you are unable to use the telephone, for example due to a hearing or speech impairment, you can email **iqvia.covid19survey@nhs.net**

2



Once you have registered, the next time you will hear from us is when **a survey team member contacts you** the evening before your planned visit.

If this time isn't convenient for you, you can change it. We will try to contact you in the week after you register.

3



On the day of the appointment, **a survey team member will arrive at your home** to complete the visit. The survey team member will not need to enter your home.

What do I get for taking part?

Every person who takes part in the survey **will receive a £50 voucher for the first visit they complete.**

For every further visit that they complete, **they will each receive a £25 voucher.**

Vouchers will only be given for visits that are completed.

If the survey is stopped, or if you choose to withdraw, **you would not receive vouchers for visits that do not happen.**

What will happen with my data?

- Any information you give us is protected by law and is treated as confidential.
- All samples are collected on behalf of the Office for National Statistics and the University of Oxford.
- All testing of these samples is done by the University of Oxford and national Lighthouse Laboratories.
- You will be told the results of all tests you complete.
- The companies involved in running the survey will only use your information for the purpose of this survey – **please see the Participant Information Sheet for full details about what will happen with your data.**
- The results are already being shared so that everyone knows what we are finding (**www.ndm.ox.ac.uk/covid-19/covid-19-infection-survey/results**).
None of this information identifies you or your family.

Further information & useful websites:

To watch a video that shows how to take a swab, see www.ndm.ox.ac.uk/covid-19/covid-19-infection-survey/video-guides

Some translations of this summary and other survey information are available on www.ons.gov.uk/cis/languages

To find out more see the detailed participant information sheet that came with this leaflet, or visit www.ons.gov.uk/cis

If you are affected by any of the issues raised in this leaflet or are looking for information on COVID-19 please visit:

- Coronavirus explained: coronavirusexplained.ukri.org/en/
- Government guidelines: www.gov.uk/coronavirus
- NHS advice: [www.nhs.uk/conditions/coronavirus covid-19/](http://www.nhs.uk/conditions/coronavirus-covid-19/)
- Samaritans - Emotional support for everyone: www.samaritans.org
- Mind - Advice and support for anyone with a mental health problem: www.mind.org.uk